



# POWER PRECISION PERFORMANCE

Comprehensive line of high-performance **holemaking solutions** built for your toughest challenges and materials



**With KYOCERA SGS, you get:**

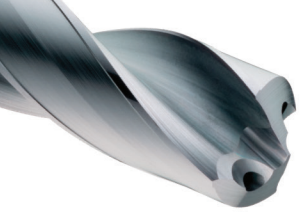
- ✓ **Unified tooling lineup** - Simplified holemaking across all materials and operations
- ✓ **Precision geometry and coating technology** - Maximized hole accuracy, cylindricity and surface finish
- ✓ **Dedicated application support** - Reduce cycle-time, increase tool life and boost productivity
- ✓ **APEX Application Expert** - Online application connects you with expert tooling recommendations and application data

**To purchase, contact your authorized SGS distributor today!**

Contact SGS for Product Support: **(330) 686-5700**

**APEX**





### Series 142P



**P** Steel  $\leq$  45 HRc

Thru-Coolant

3xD 5xD 8xD 12xD

Dia. = 0.1250" - 0.7500"

Dia. = 3mm - 16mm

2-Flute | 4-Margin Design



[View Series](#)



### Series 143M-S



**M** Stainless Steel  $\leq$  45 HRc

**S** Heat-Resistant Alloys

**S** Titanium Alloys  $\leq$  45 HRc

Thru-Coolant

3xD 5xD

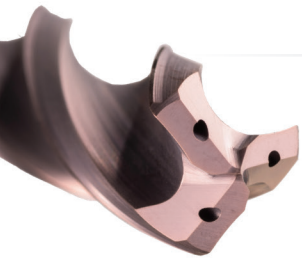
Dia. = 0.1250" - 0.7500"

Dia. = 3mm - 16mm

2-Flute | Eccentric 2-Margin Design



[View Series](#)



### Series 141K



**K** Cast Iron  $\leq$  45 HRc

**K** Cast Iron  $\geq$  45 HRc

Thru-Coolant

5xD

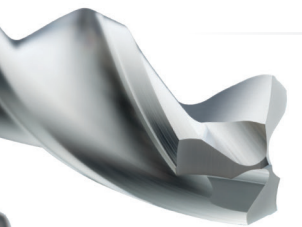
Dia. = 0.1250" - 0.7500"

Dia. = 3mm - 16mm

3-Flute | 3-Margin Design



[View Series](#)



### Series 131N



**N** Non-Ferrous Alloys

**N** Plastics / Composites

External Coolant

3xD 5xD

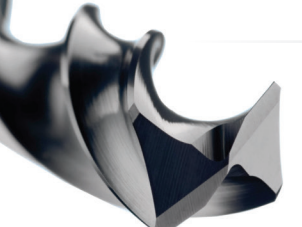
Dia. = 0.1250" - 0.7500"

Dia. = 3mm - 16mm

3-Flute | 3-Margin Design



[View Series](#)



### Series 135



**U** Universal  
(Ferrous / Non-Ferrous)

External Coolant

3xD 5xD

Dia. = 0.0156" - 0.9219"

Dia. = 1.25mm - 22mm

2-Flute | 4-Margin Design



[View Series](#)



### Series 146U



**U** Universal  
(Ferrous / Non-Ferrous)

Thru-Coolant

3xD 5xD

Dia. = 0.1250" - 0.8125"

Dia. = 3mm - 20.5mm

2-Flute | 4-Margin Eccentric Design

For Curved Surfaces & Cross Holes



[View Series](#)



### Series 136U



**U** Universal  
(Ferrous / Non-Ferrous)

External Coolant

2xD

Dia. = 0.0625" - 0.8125"

Dia. = 1.5mm - 20.5mm

2-Flute | 4-Margin Eccentric Design

For Curved Surfaces & Cross Holes



[View Series](#)